

2C Peterson Street SOMERTON PARK SA

 3  2  1

Impressive Courtyard Home - Beautifully Maintained and Presented

Price Guide: \$700,000 - \$750,000

Ideally positioned in the ultra-convenient lifestyle suburb of Somerton Park, this courtyard home instantly appeals to those aspiring to a low maintenance lifestyle.

Beyond the gated entry you are welcomed to the spacious living area leading through to the sought-after open plan kitchen, dining and family. The kitchen is the hub of the home overlooking the landscaped front garden featuring walk in pantry, dishwasher, and induction cook top. To the rear of the home, the alfresco entertainment area offers the perfect place to entertain family and friends all year long.

Sleeping accommodation comprises of three large bedrooms, the spacious master suite features walk in robe and ensuite. The additional bedrooms feature built in robes and are serviced by the main bathroom with shower, bath and separate toilet.

Features to love:

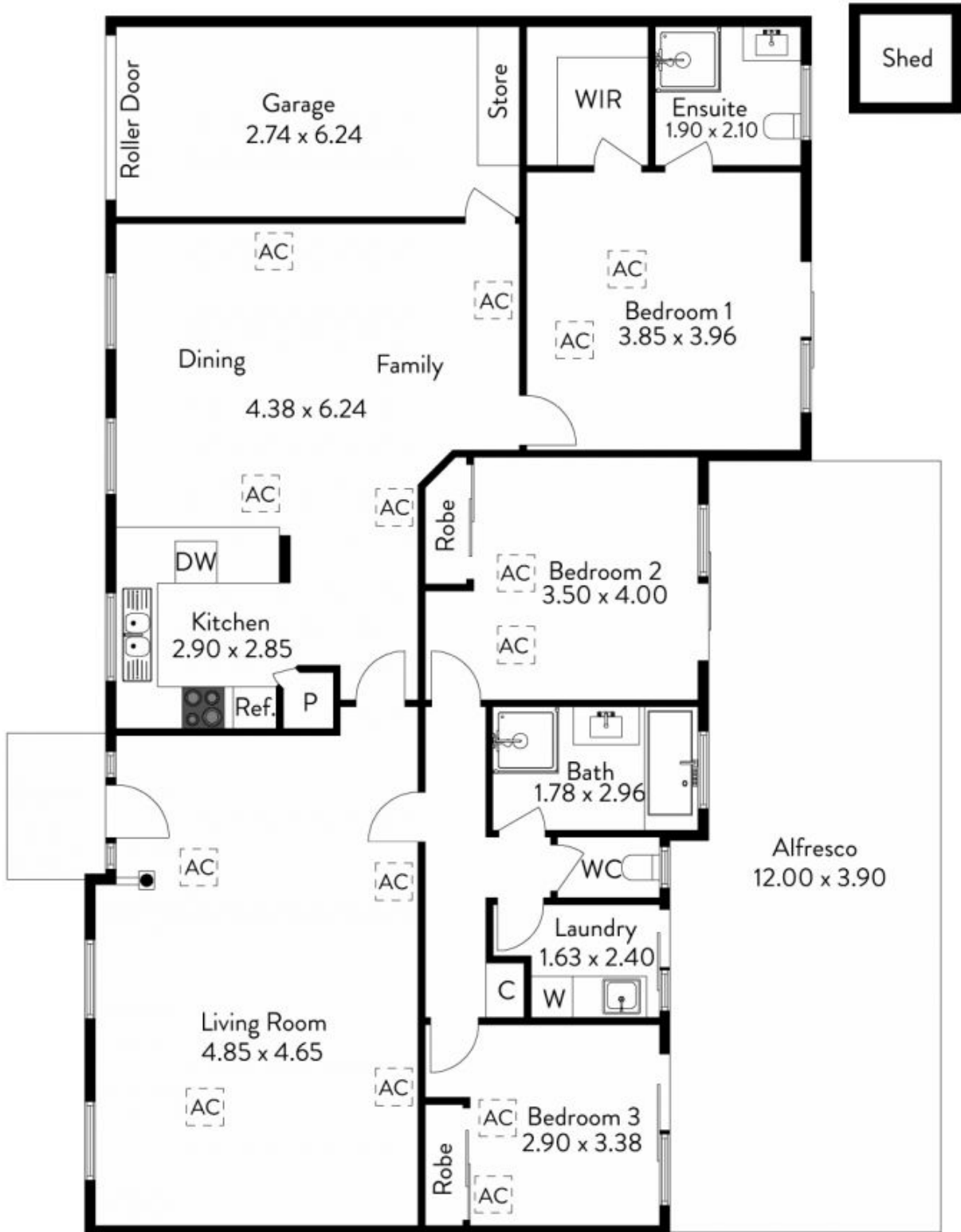
Ducted reverse cycle heating and cooling plus ducted evaporate air conditioning

Type : House

View : <https://www.mccammonrealestate.com.au/sale/sa/western-beachside-suburbs/somerton-park/residential/house/6885206>

Brett McCammon
08 8295 8885

2c Peterson Street, Somerton Park



The floor plan is not to scale; measurements are indicative and in metres. Exterior elements are not in position. Plans should not be relied on. Interested parties should make and rely on their own enquiries.

Produced by DIAKRIT

McCammon
REAL ESTATE